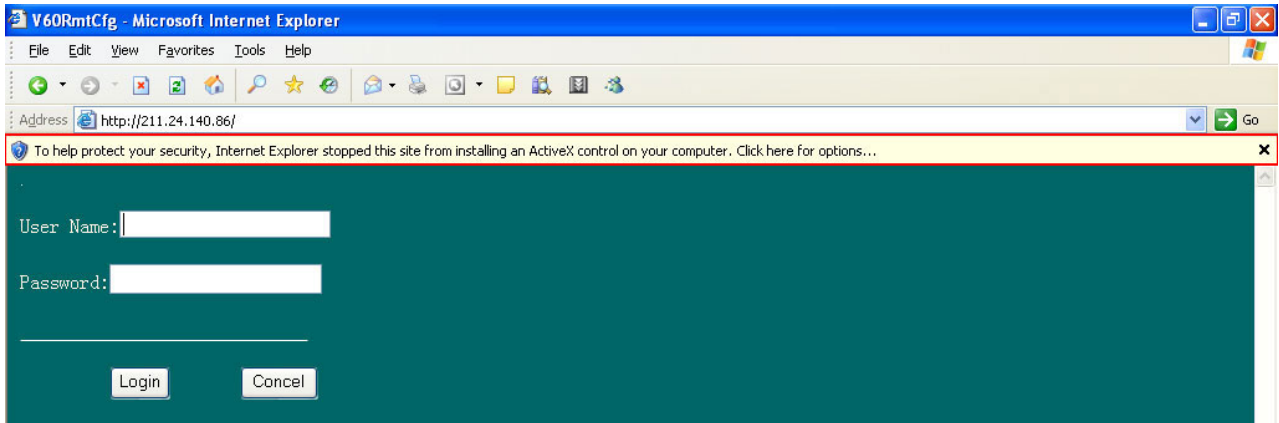


ActiveX Configuration Guide

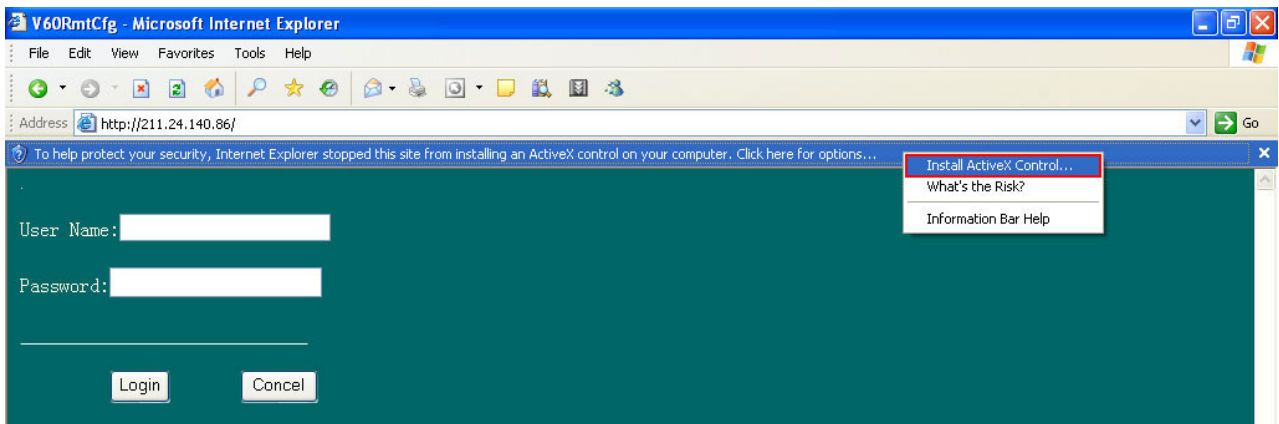
- Note: -
1. Support Internet Explorer 6 or Internet Explorer 7 only.
 2. It only needs to install once.

Internet Explorer 6 Configuration

1. Start internet browser and type your DVR server hostname (example: www.reginex.com) or IP address (example: 211.24.140.86), an options bar will be displayed, as show as below diagram.



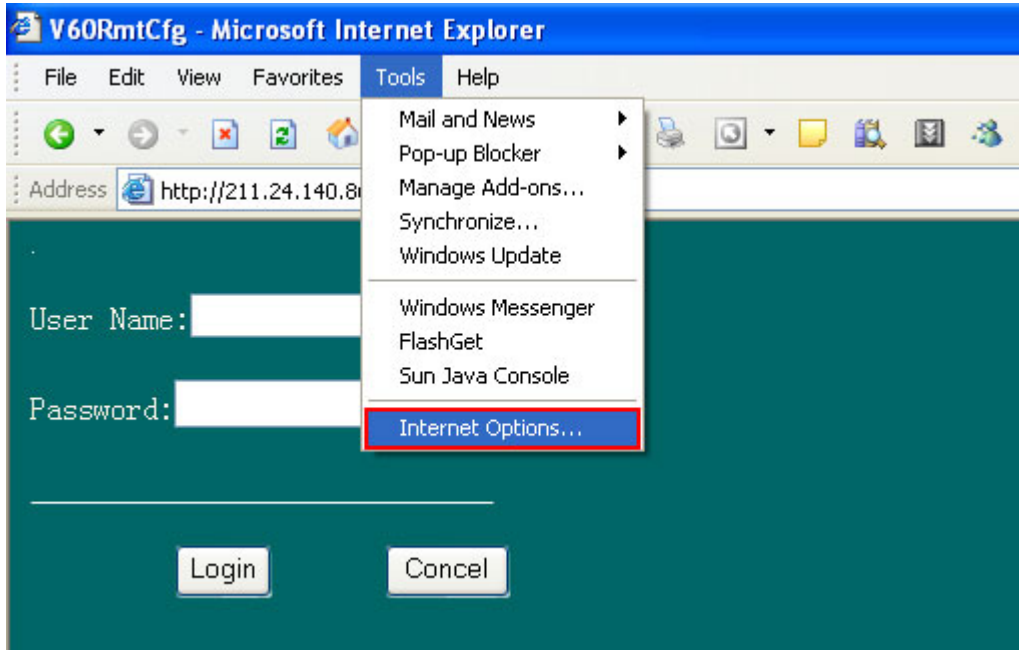
2. Please click on the options bar and select 'Install ActiveX Control...'



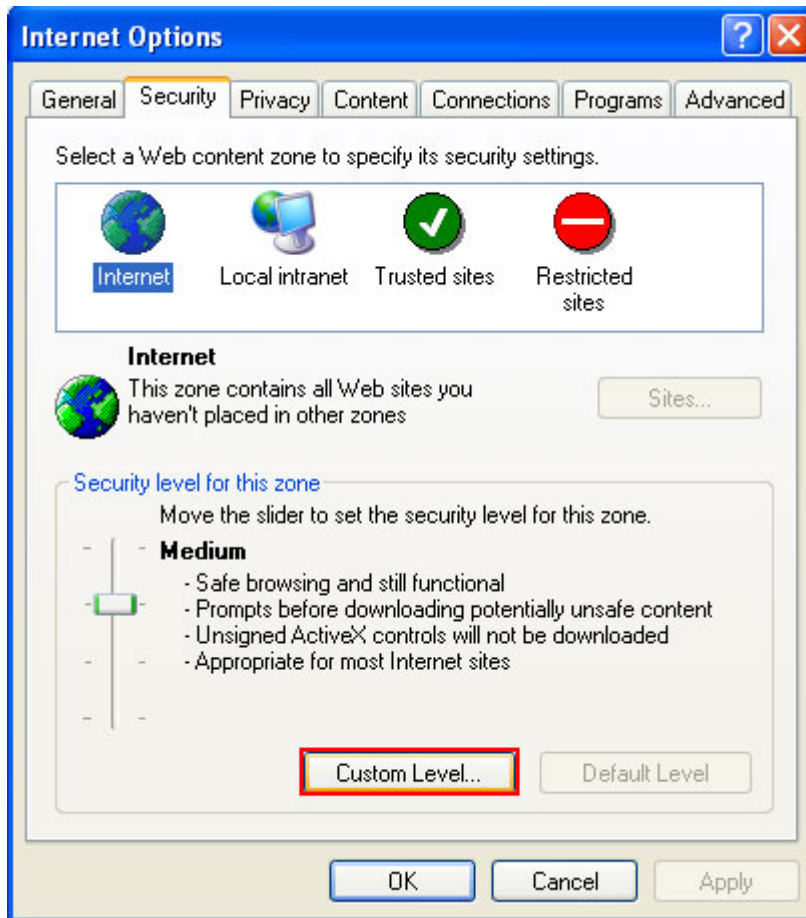
3. A security warning will be displayed.



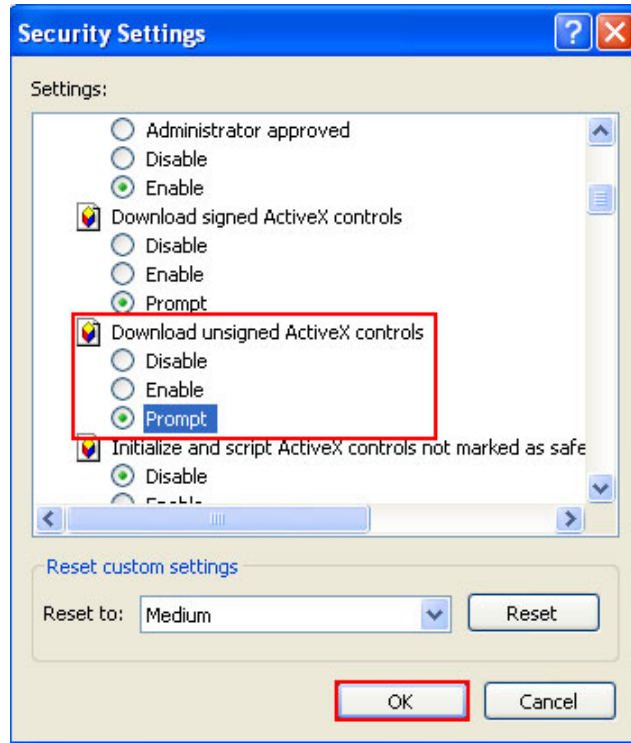
4. Please select “Tools” on the Internet Explorer bar and select “Internet Options...” to enter the Internet Explorer setting.



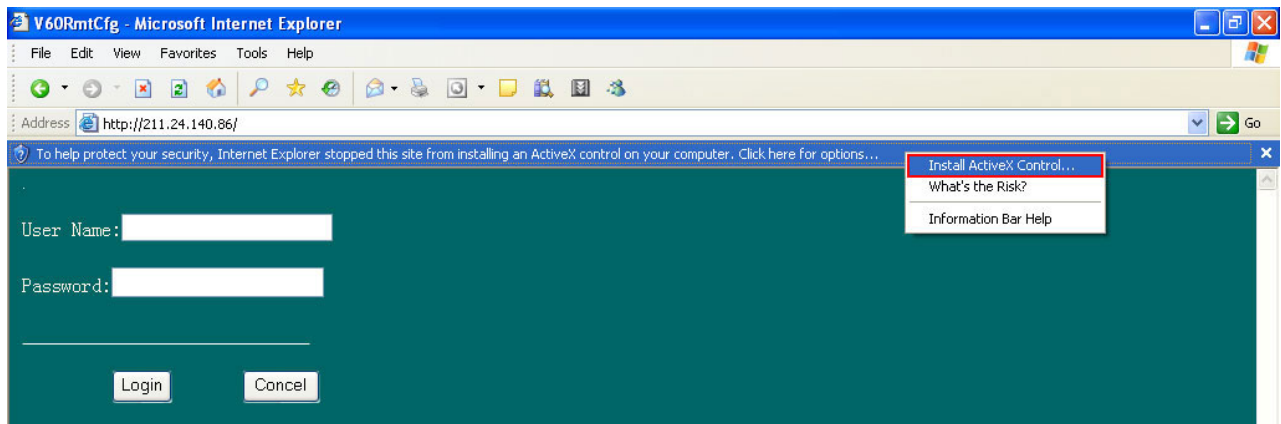
5. Please select Security tab and click on “Custom Level...” to enter security settings.



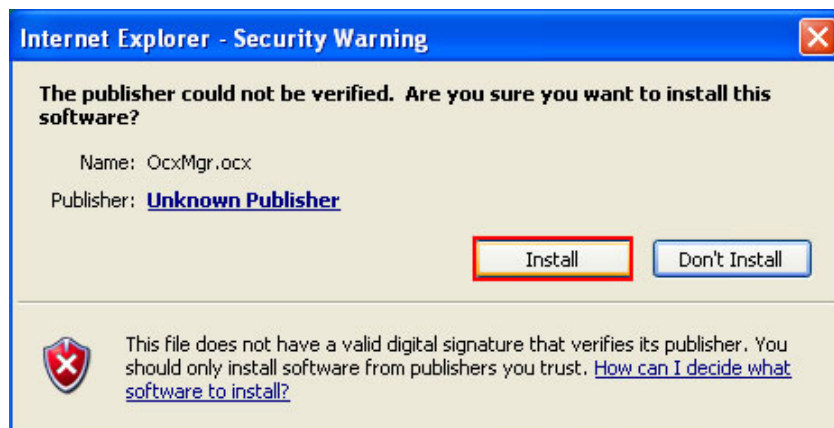
6. Please look for “Download unsigned ActiveX controls” and select “Prompt” (default is “Disable”) and press “OK” to save the new settings.



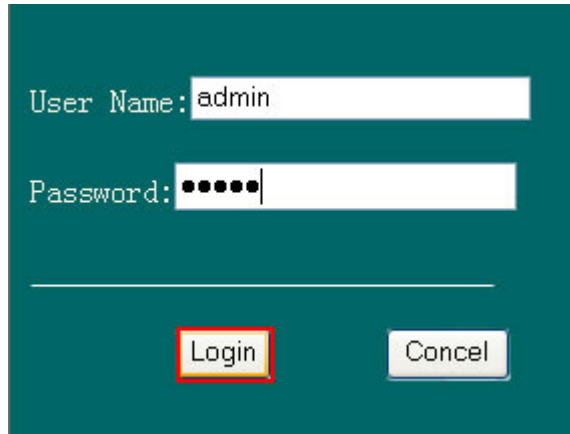
7. Start internet browser and re-type your DVR server hostname or IP address and select “Install ActiveX Control...”.



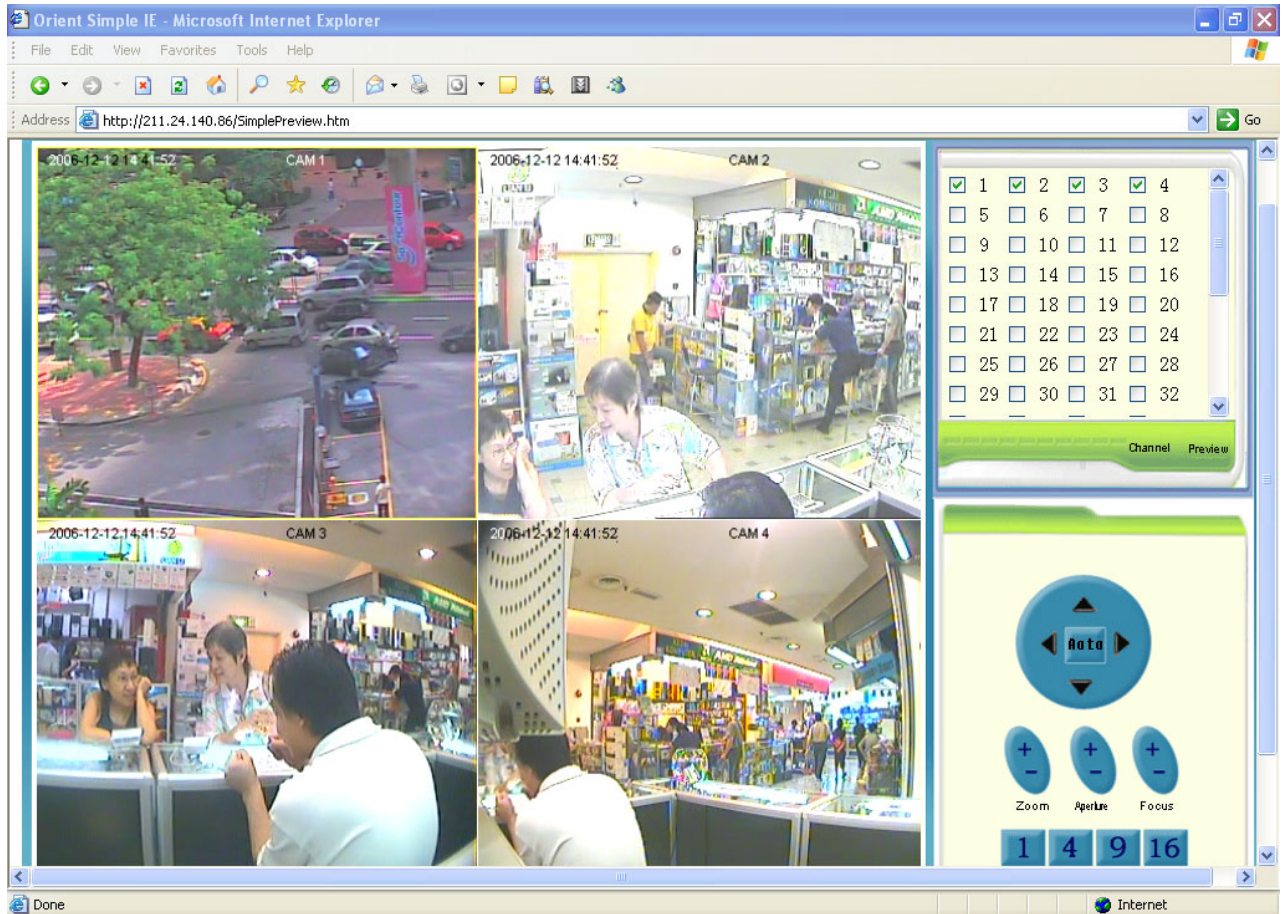
8. Please click the “Install” button to install the unsigned ActiveX.



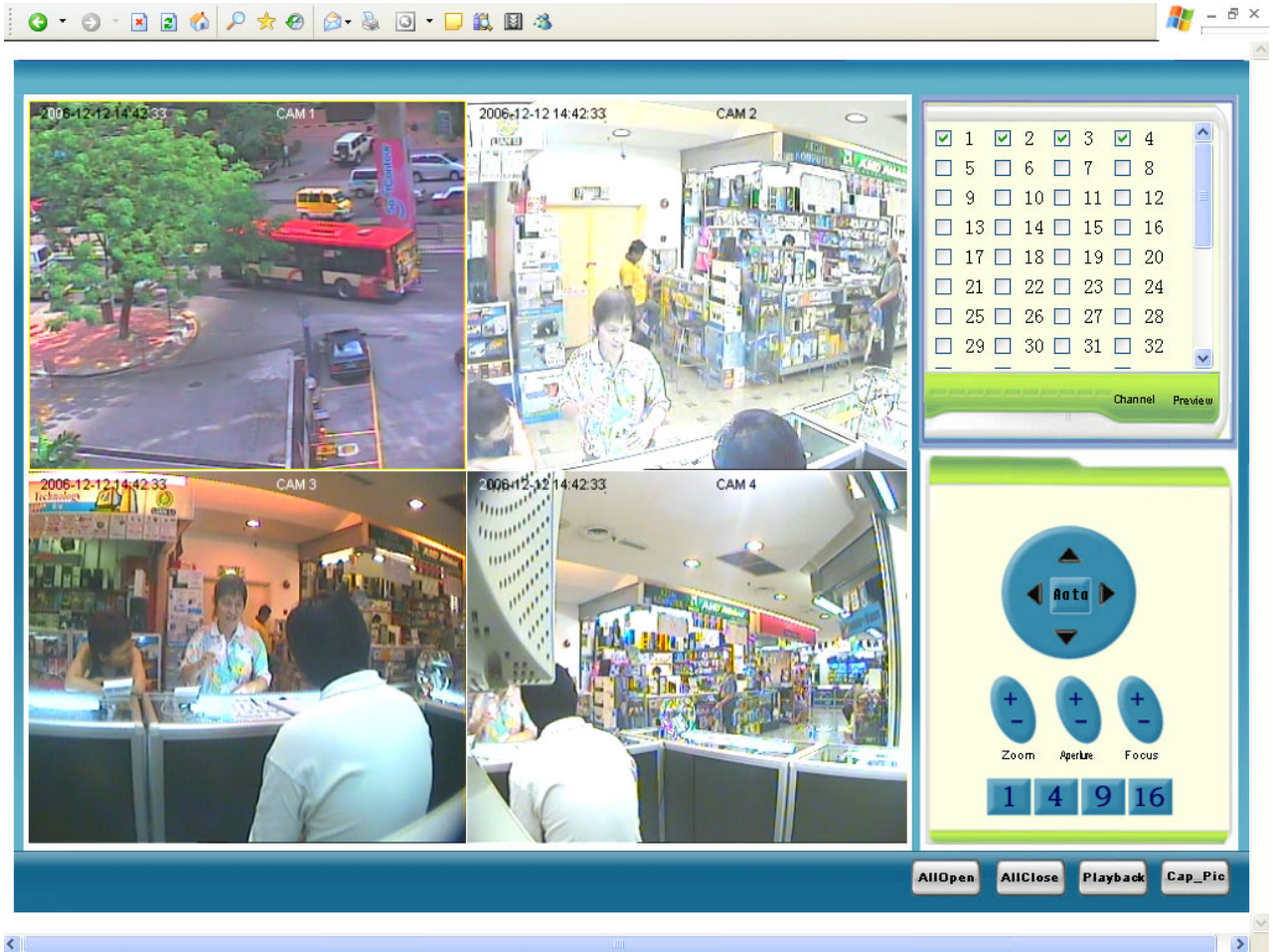
9. Please enter username and password (as in DVR server) and click “Login”.



10. You have successfully login to your DVR system. You'll be able to select your view camera or may select all by clicking on “AllOpen” at the right bottom. Remote playbacks are also available.

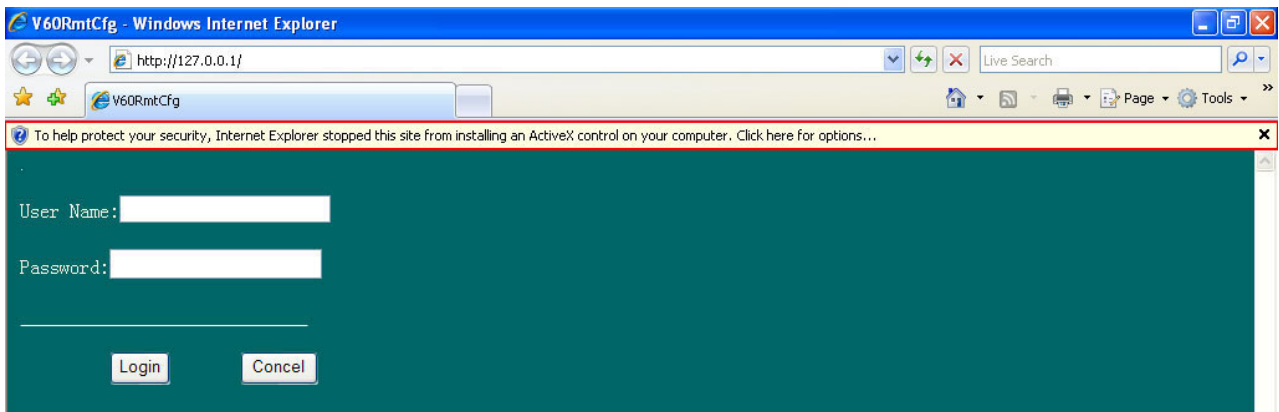


Note: To view full screen display, please press “F11” on your keyboard.

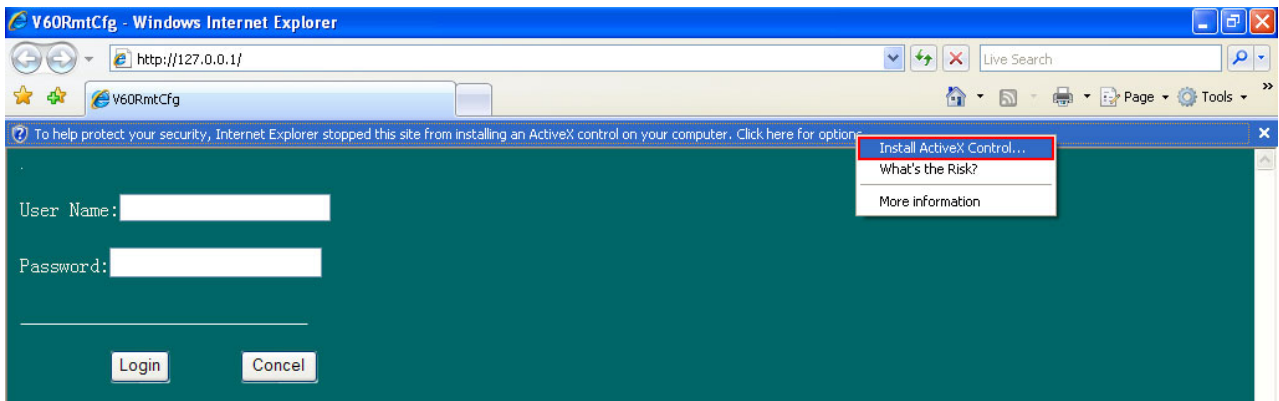


Internet Explorer 7 Configuration

1. Start internet browser and type your DVR server hostname (example: www.reginex.com) or IP address (example: 211.24.140.86), an options bar will be displayed, as show as below diagram.



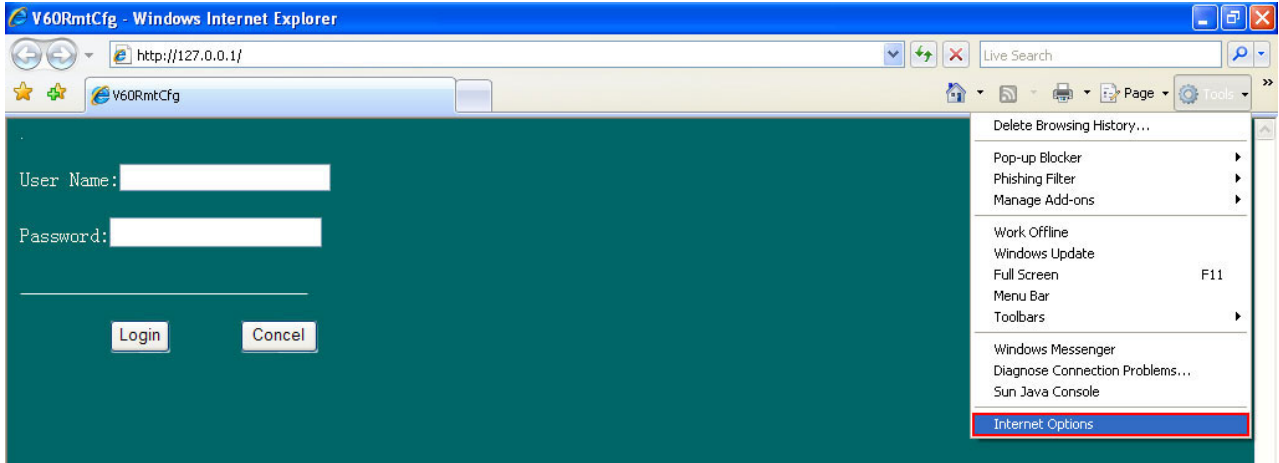
2. Please click on the options bar and select 'Install ActiveX Control...'.



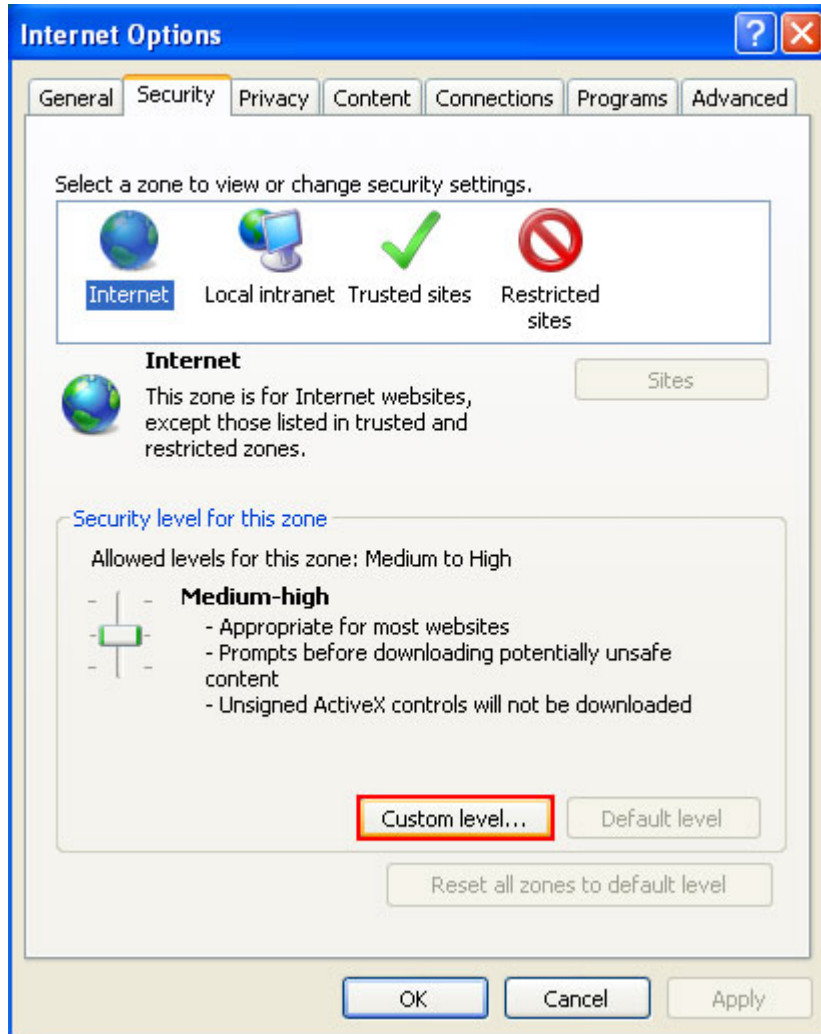
3. A security warning will be displayed.



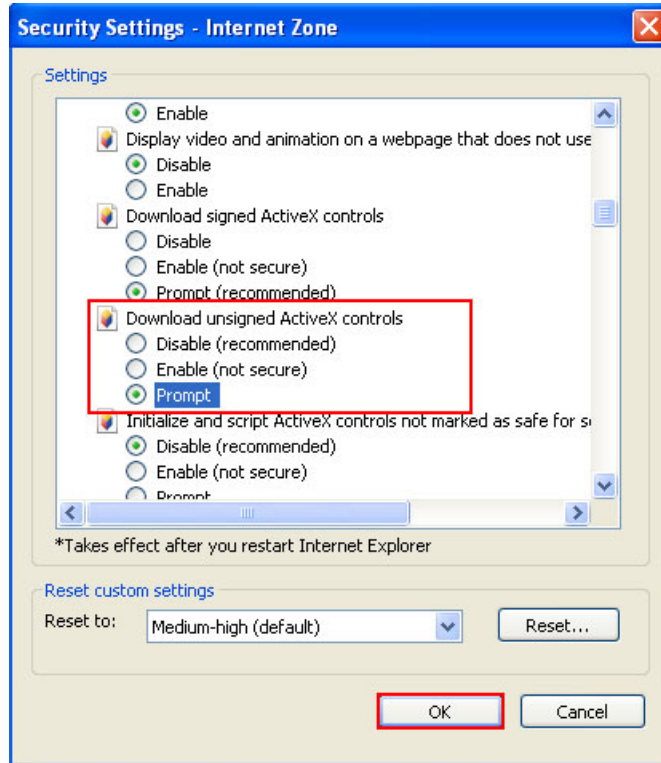
4. Please select “Tools” on the Internet Explorer bar and select “Internet Options...” to enter the Internet Explorer setting.



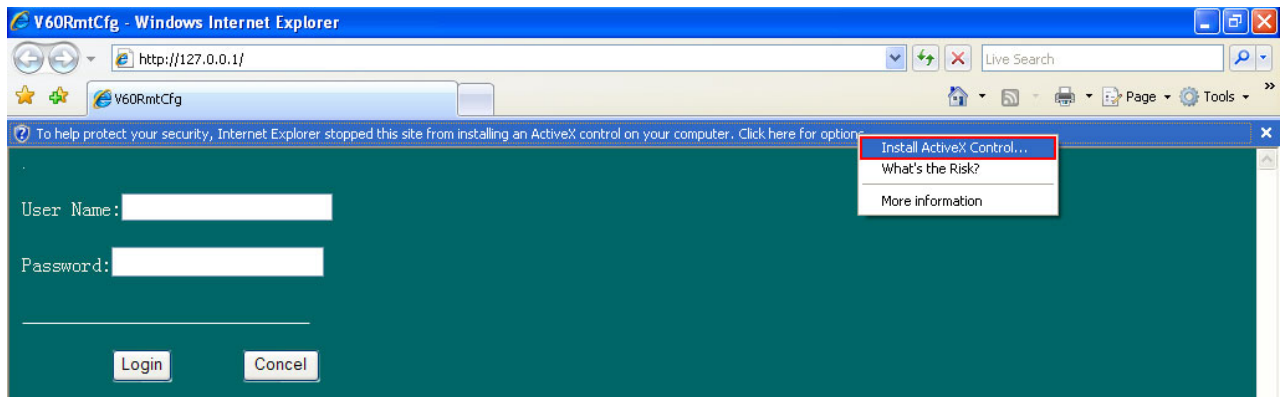
5. Please select Security tab and click on “Custom Level...” to enter security settings.



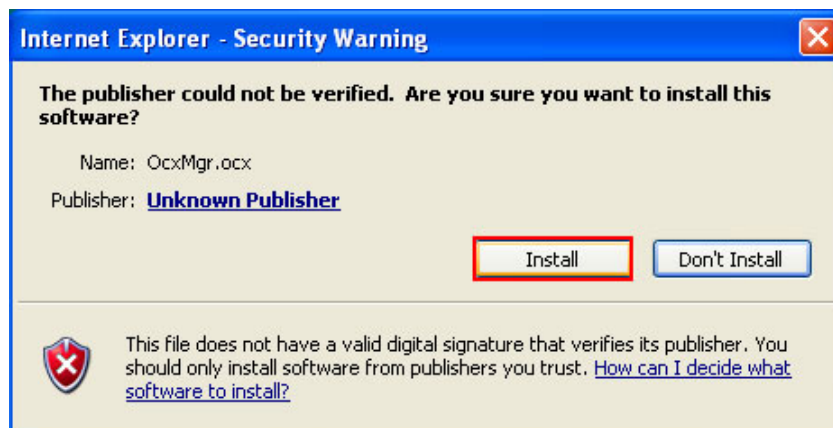
6. Please look for “Download unsigned ActiveX controls” and select “Prompt” (default is “Disable”) and press “OK” to save the new settings.



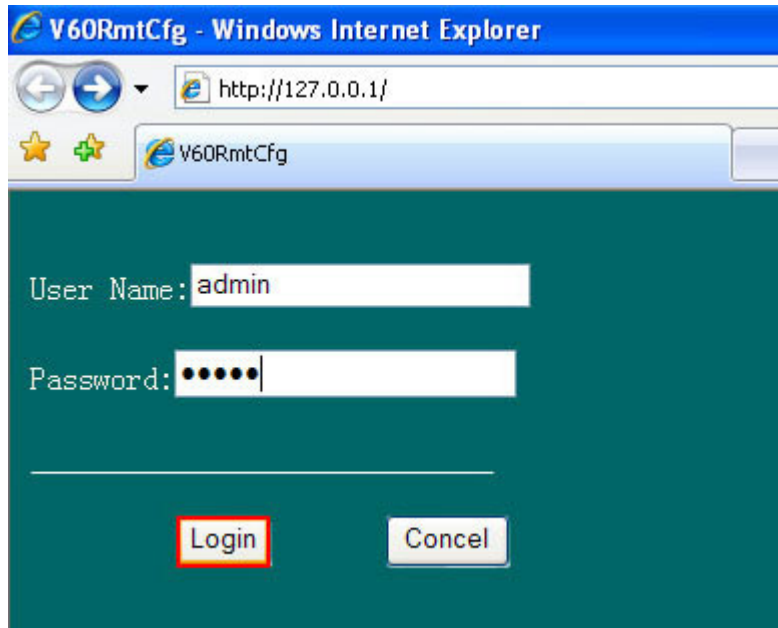
7. Start internet browser and re-type your DVR server hostname or IP address and select “Install ActiveX Control...”.



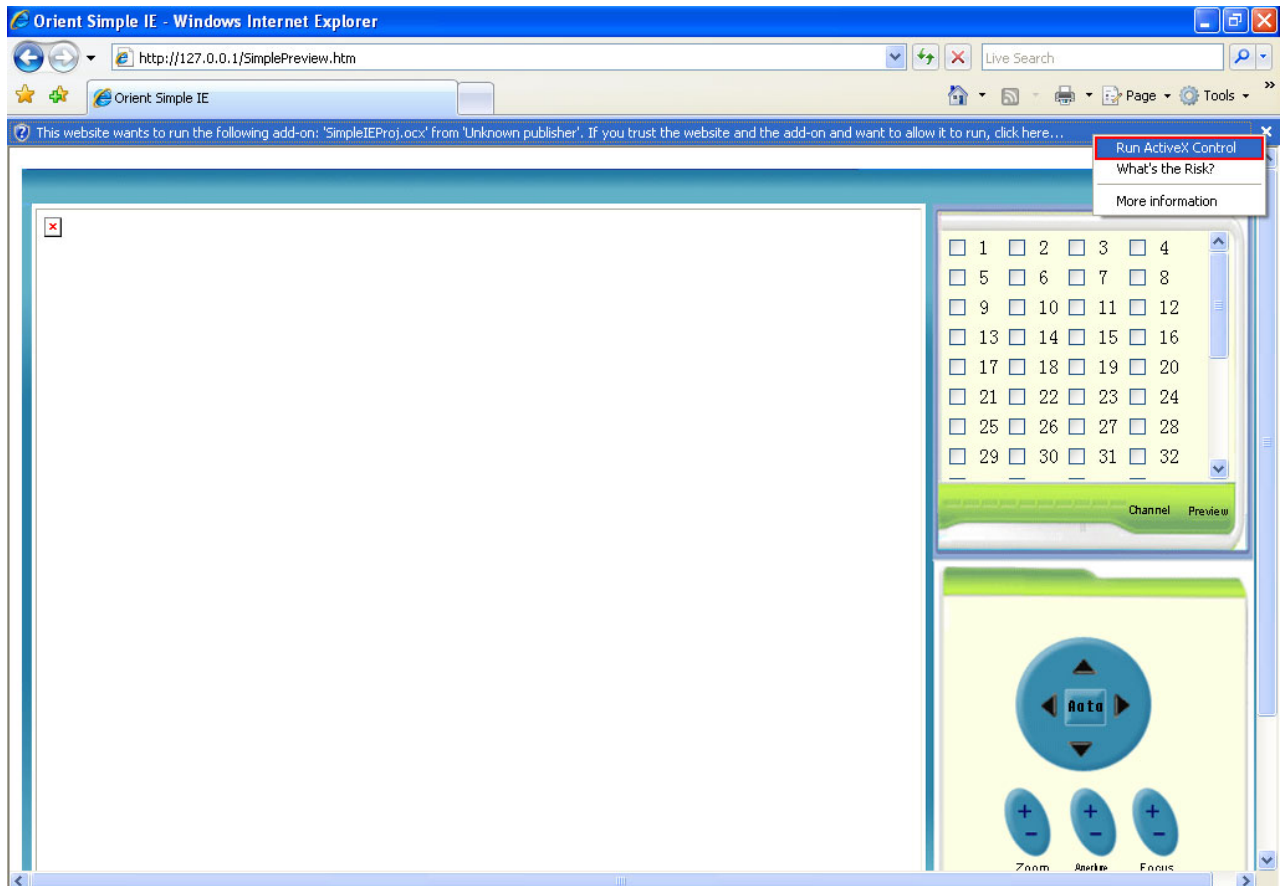
8. Please click the “Install” button to install the unsigned ActiveX.



9. Please enter username and password (as in DVR server) and click “Login”.



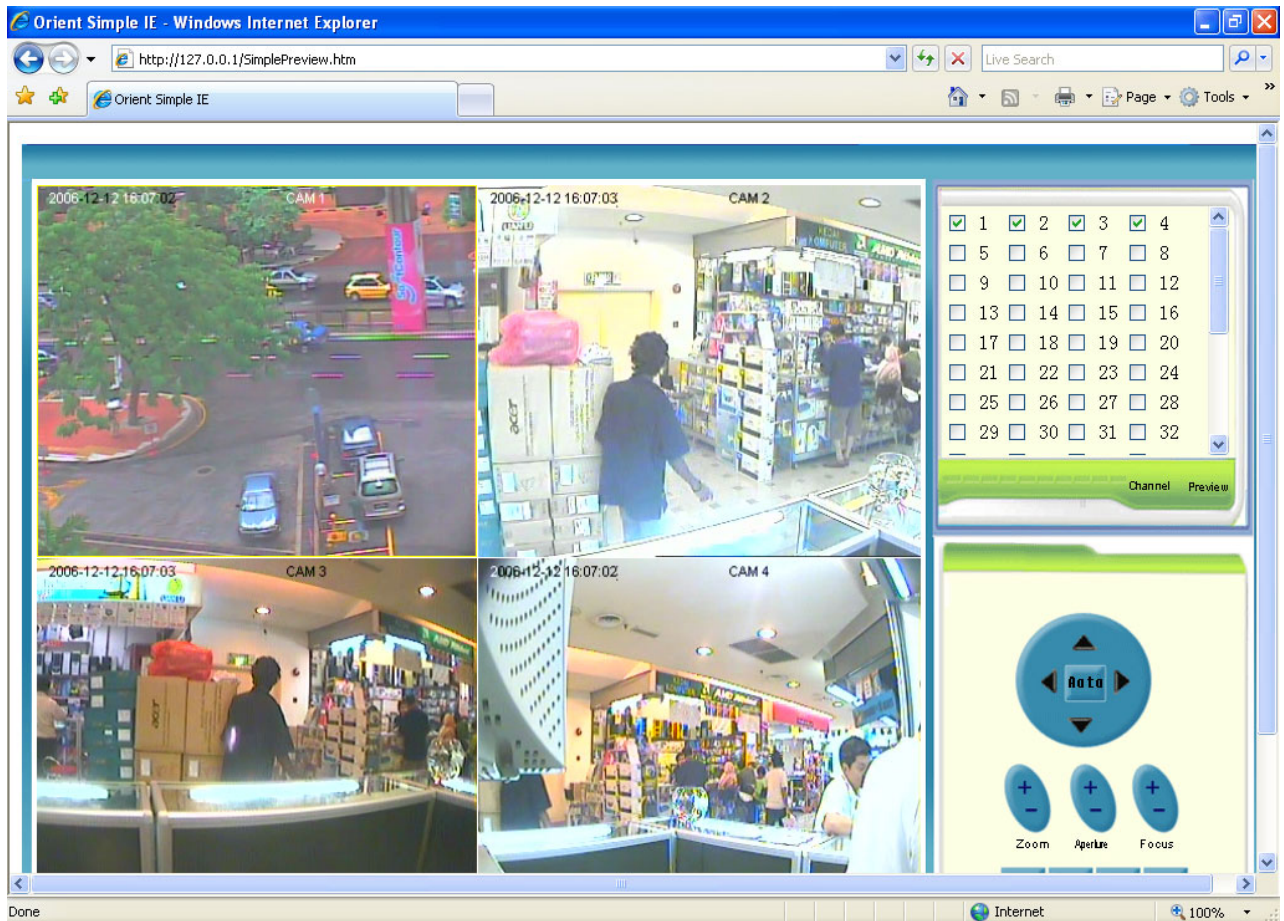
10. To run the unsigned ActiveX control in Internet Explorer 7, you need to click the control bar and select “Run ActiveX Control”.



11. Please click the “Run” button to run the unsigned ActiveX.



12. You have successfully login to your DVR system. You'll be able to select your view camera or may select all by clicking on “AllOpen” at the right bottom. Remote playbacks are also available.



Note: To view full screen display, please press “F11” on your keyboard.

